

FOR SALE OR LEASE

CRANE READY \pm 20,500 SF WAREHOUSE



19710 Aldine Westfield Rd, Houston TX 77338

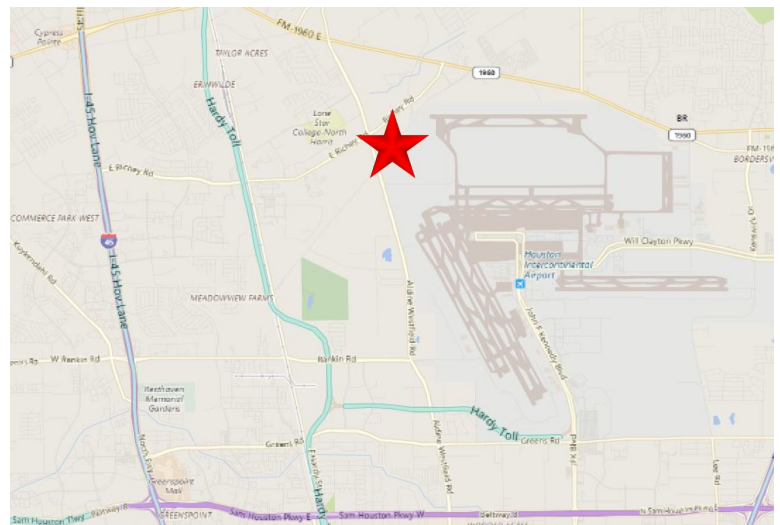


Shell Condition, fully insulated warehouse, located in the North Hardy Corridor, available for sale or lease. TI is negotiable with a long term lease. Adjacent land can be included with a sale or lease*.

(*The additional 7.25 acres of land is represented by a different broker.)

PROPERTY DETAILS:

- Building: \pm 20,500 SF
- Land: \pm 2.13 Acres
- **Additional Land Available – Up to 7.25 Acres**
- Office: Build-to-Suit
- Crane Capacity: 20-Ton Crane Ready
- Eave Height: 29.5'
- Hook Height: 20'
- Power: 3 Phase/480 Volt
- Pricing: Please contact Broker



FOR MORE INFORMATION, PLEASE CONTACT:

George Froming
Senior Associate
o: (713) 332-8217
c: (832) 651-4209
georgef@belvoir.net

15835 Park Ten Place, Suite 150 | Houston, Texas 77084 | belvoir.net

The information contained herein was obtained from sources believed reliable; however, Belvoir Real Estate Group, LLC. makes no guarantees, warranties or representations as to the completeness or accuracy thereof. The presentation on this property is submitted subject to errors, omission, changes of price, or conditions, prior to sale or lease, or withdrawal without notice.

19710 ALDINE WESTFIELD RD
HOUSTON, TX 77338



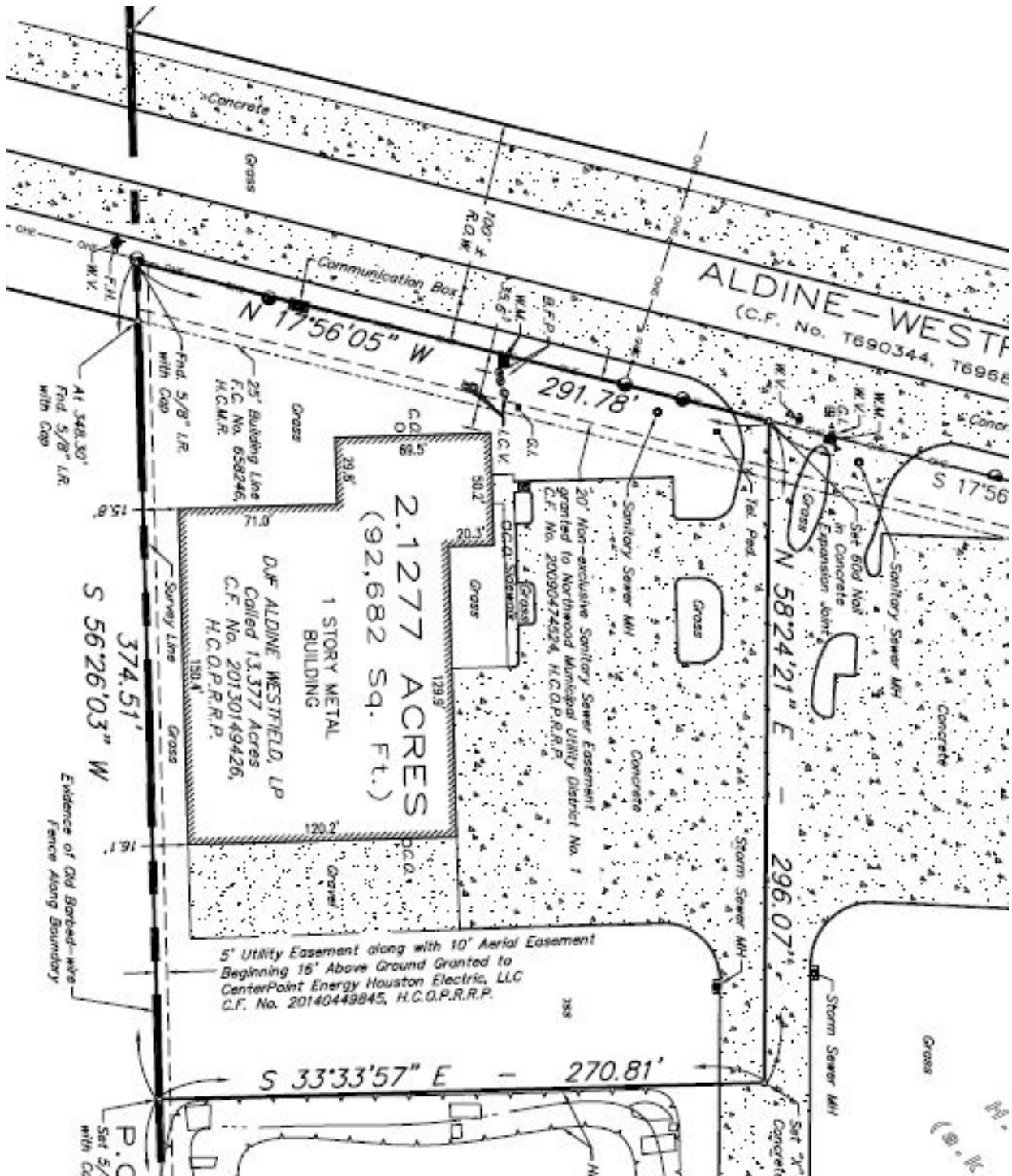
FOR MORE INFORMATION, PLEASE CONTACT:

George Froming
Senior Associate
o: (713) 332-8217
c: (832) 651-4209
georgef@belvoir.net

15835 Park Ten Place, Suite 150 | Houston, Texas 77084 | belvoir.net

The information contained herein was obtained from sources believed reliable; however, Belvoir Real Estate Group, LLC. makes no guarantees, warranties or representations as to the completeness or accuracy thereof. The presentation on this property is submitted subject to errors, omission, changes of price, or conditions, prior to sale or lease, or withdrawal without notice.

19710 ALDINE WESTFIELD RD HOUSTON, TX 77338



FOR MORE INFORMATION, PLEASE CONTACT:

George Froming
Senior Associate
o: (713) 332-8217
c: (832) 651-4209
georgef@belvoir.net

15835 Park Ten Place, Suite 150 | Houston, Texas 77084 | belvoir.net

The information contained herein was obtained from sources believed reliable; however, Belvoir Real Estate Group, LLC. makes no guarantees, warranties or representations as to the completeness or accuracy thereof. The presentation on this property is submitted subject to errors, omission, changes of price, or conditions, prior to sale or lease, or withdrawal without notice.

19710 ALDINE WESTFIELD RD
HOUSTON, TX 77338



FOR MORE INFORMATION, PLEASE CONTACT:

George Froming
Senior Associate
o: (713) 332-8217
c: (832) 651-4209
georgef@belvoir.net

15835 Park Ten Place, Suite 150 | Houston, Texas 77084 | belvoir.net

The information contained herein was obtained from sources believed reliable; however, Belvoir Real Estate Group, LLC. makes no guarantees, warranties or representations as to the completeness or accuracy thereof. The presentation on this property is submitted subject to errors, omission, changes of price, or conditions, prior to sale or lease, or withdrawal without notice.

19710 ALDINE WESTFIELD RD
HOUSTON, TX 77338



Information About Brokerage Services

Texas law requires all real estate license holders to give the following information about brokerage services to prospective buyers, tenants, sellers and landlords.

11-2-2015

TYPES OF REAL ESTATE LICENSE HOLDERS:

- **A BROKER** is responsible for all brokerage activities, including acts performed by sales agents sponsored by the broker.
- **A SALES AGENT** must be supervised by a broker to perform any services and works with clients on behalf of the broker.

A BROKER'S MINIMUM DUTIES REQUIRED BY LAW (A client is the person or party that the broker represents):

- Put the interests of the client above all others, including the broker's own interests;
- Inform the client of any material information about the property or transaction received by the broker;
- Answer the client's questions and present any offer to or counter-offer from the client; and
- Treat all parties to a real estate transaction honestly and fairly.

A LICENSE HOLDER CAN REPRESENT A PARTY IN A REAL ESTATE TRANSACTION:

- **AS AGENT OR SUBAGENT FOR OWNER (SELLER/LANDLORD):** The broker becomes the property owner's agent through an agreement with the owner, usually in a written listing to sell or property management agreement. A subagent represents the owner, not the buyer, through an agreement with the owner's broker. An owner's agent must perform the broker's minimum duties above and must inform the owner of any material information about the property or transaction known by the agent, including information disclosed to the agent or subagent by the buyer or buyer's agent.
- **AS AGENT FOR BUYER/TENANT:** The broker becomes the buyer/tenant's agent by agreeing to represent the buyer, usually through a written representation agreement. A buyer's agent must perform the broker's minimum duties above and must inform the buyer of any material information about the property or transaction known by the agent, including information disclosed to the agent by the seller or seller's agent.
- **AS AGENT FOR BOTH - INTERMEDIARY:** To act as an intermediary between the parties the broker must first obtain the written agreement of *each party* to the transaction. The written agreement must state who will pay the broker and, in conspicuous bold or underlined print, set forth the broker's obligations as an intermediary. A broker who acts as an intermediary:
 - Must treat all parties to the transaction impartially and fairly;
 - May, with the parties' written consent, appoint a different license holder associated with the broker to each party (owner and buyer) to communicate with, provide opinions and advice to, and carry out the instructions of each party to the transaction.
 - Must not, unless specifically authorized in writing to do so by the party, disclose:
 - o that the owner will accept a price less than the written asking price;
 - o that the buyer/tenant will pay a price greater than the price submitted in a written offer; and
 - o any confidential information or any other information that a party specifically instructs the broker in writing not to disclose, unless required to do so by law.

TO AVOID DISPUTES, ALL AGREEMENTS BETWEEN YOU AND A BROKER SHOULD BE IN WRITING AND CLEARLY ESTABLISH:

- The broker's duties and responsibilities to you, and your obligations under the representation agreement.
- Who will pay the broker for services provided to you, when payment will be made and how the payment will be calculated.

LICENSE HOLDER CONTACT INFORMATION: This notice is being provided for information purposes. It does not create an obligation for you to use the broker's services. Please acknowledge receipt of this notice below and retain a copy for your records.

Belvoir Real Estate Group, LLC	9001128		(713) 332-8202
Broker's Licensed Name or Primary Assumed Business Name	License No.	Email	Phone
Matthew Goldsby	601116	matthewg@belvoir.net	(713) 332-8220
Designated Broker's Name	License No.	Email	Phone
Matthew Goldsby	601116	matthewg@belvoir.net	(713) 332-8220
Agent's Supervisor's Name	License No.	Email	Phone
George Froming	632043	georgef@belvoir.net	(713) 332-8217
Sales Agent/Associate's Name	License No.	Email	Phone

Buyer/Tenant/Seller/Landlord Initials

Date

Regulated by the Texas Real Estate Commission

Information available at www.trec.texas.gov

IABS 1-0

FOR MORE INFORMATION, PLEASE CONTACT:

George Froming
Senior Associate
o: (713) 332-8217
c: (832) 651-4209
georgef@belvoir.net

15835 Park Ten Place, Suite 150 | Houston, Texas 77084 | belvoir.net

The information contained herein was obtained from sources believed reliable; however, Belvoir Real Estate Group, LLC, makes no guarantees, warranties or representations as to the completeness or accuracy thereof. The presentation on this property is submitted subject to errors, omission, changes of price, or conditions, prior to sale or lease, or withdrawal without notice.